

OPERATING INSTRUCTION TO INSTALL THE PIT FRAME

GENERAL SAFETY INFORMATION

The aim of this type of information is to raise the awareness of users on the importance of preventing any risk, always using caution.

Carefully read the information reported in the manual and placed directly on the machine, especially safety information.



- Prevent water from dripping onto the electrical panel.
- The lighting level should always be such as to guarantee the safest possible working conditions. Should any maintenance operation be necessary in areas or parts of the machine with poor lighting, the maintenance staff must be equipped with a portable lighting system.

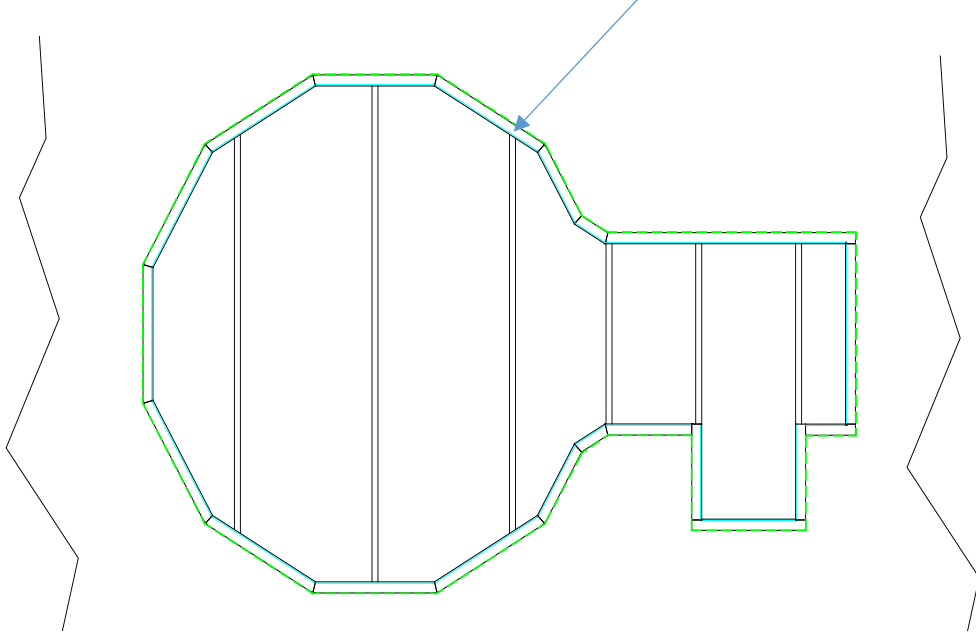


- Use accident-prevention equipment. Make sure that sleeves are tightened up around the wrists or tucked up. Wear undamaged working clothing and use common sense when operating the machine.
- Wear suitable clothing and individual protection devices according to the used products.
- Do not use any neckties, bracelets, rings or other things that swinging could be dangerously entangled in parts that are fixed or in motion.
- Use the machine in normal psycho-physical conditions.

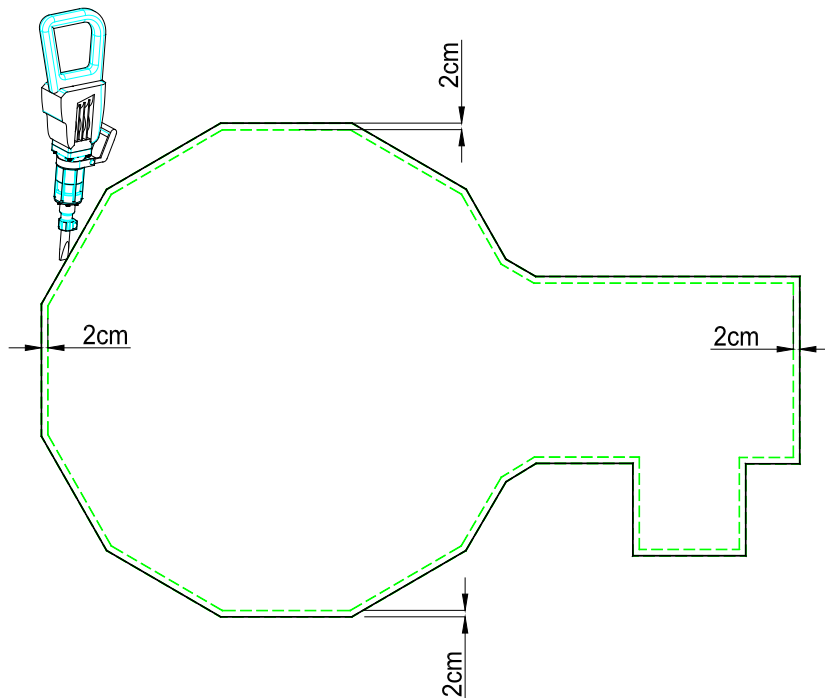


- Should it be necessary to have an assistant or some assistants, train them and inform them on the type of activity to be carried out.

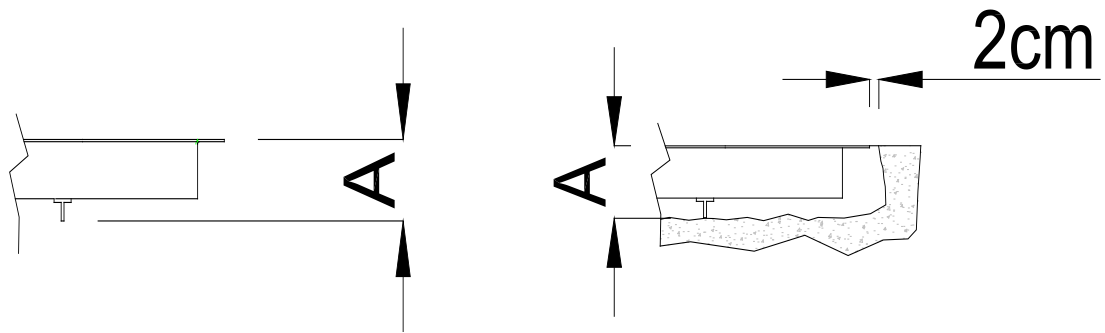
- 1) Put the frame on the ground.
- 2) Draw with a chalk or a marker pen the external dimensions of the frame on the ground.



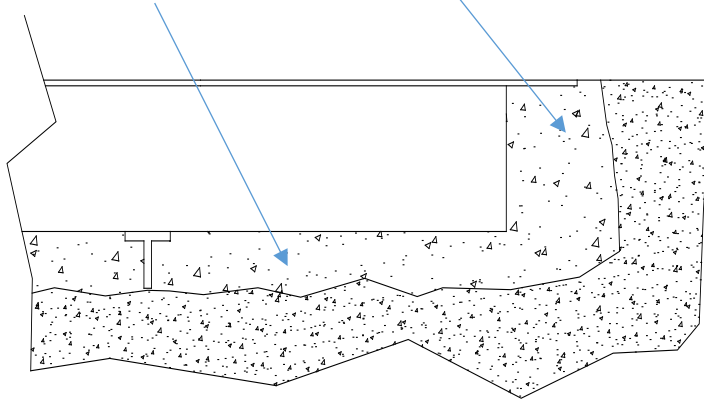
- 3) Make a hole with the jackhammer whose dimensions are 2 centimeters larger than the measure of the frame.



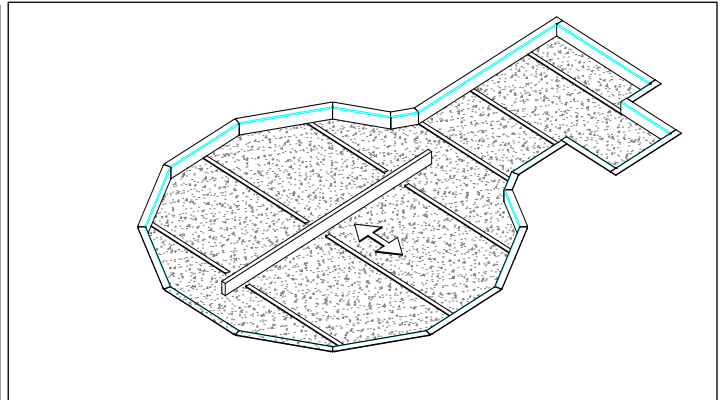
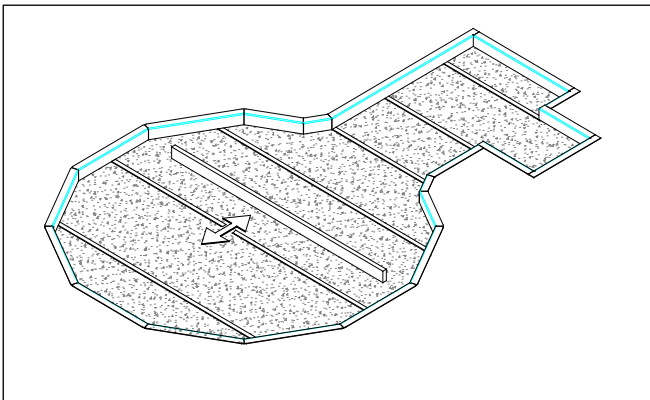
Make a hole as deep as the pit frame.



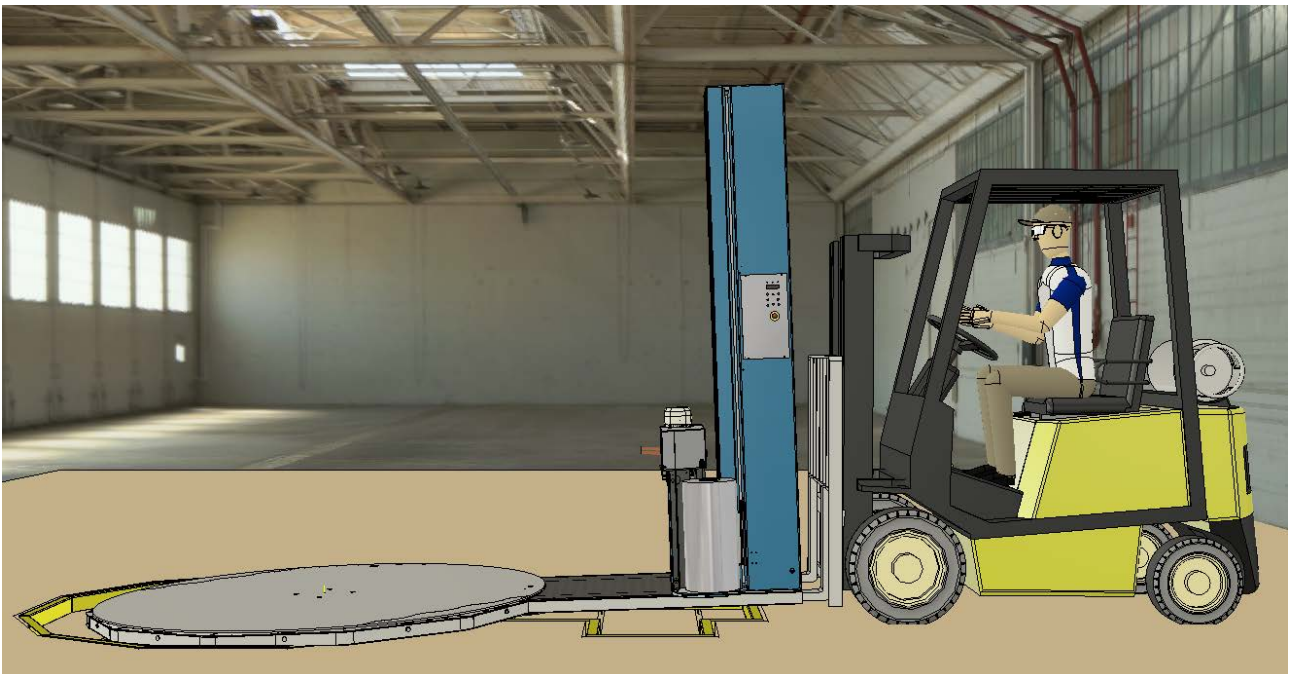
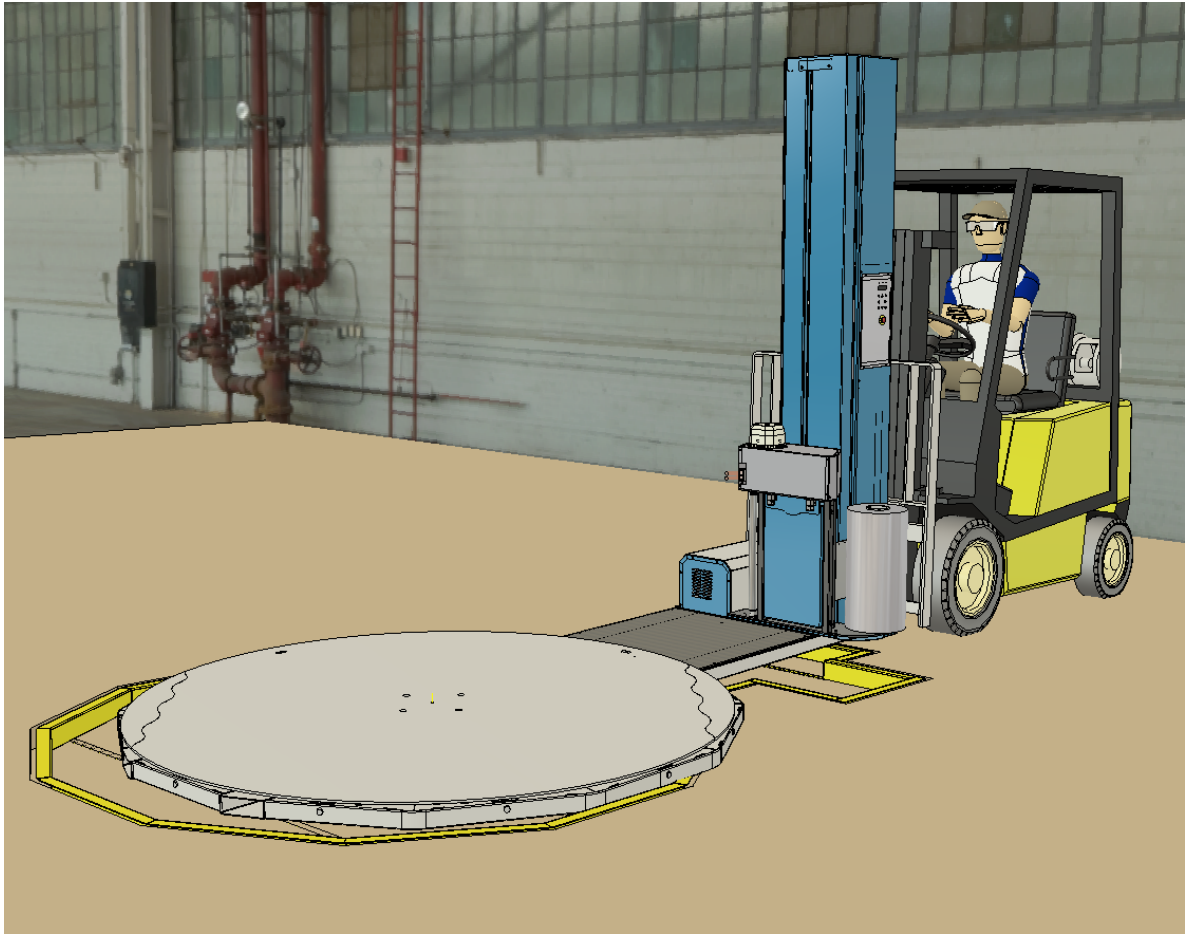
- 4) Fill up the empty space with the concrete, make sure to realize the level with the inferior crossbeams.



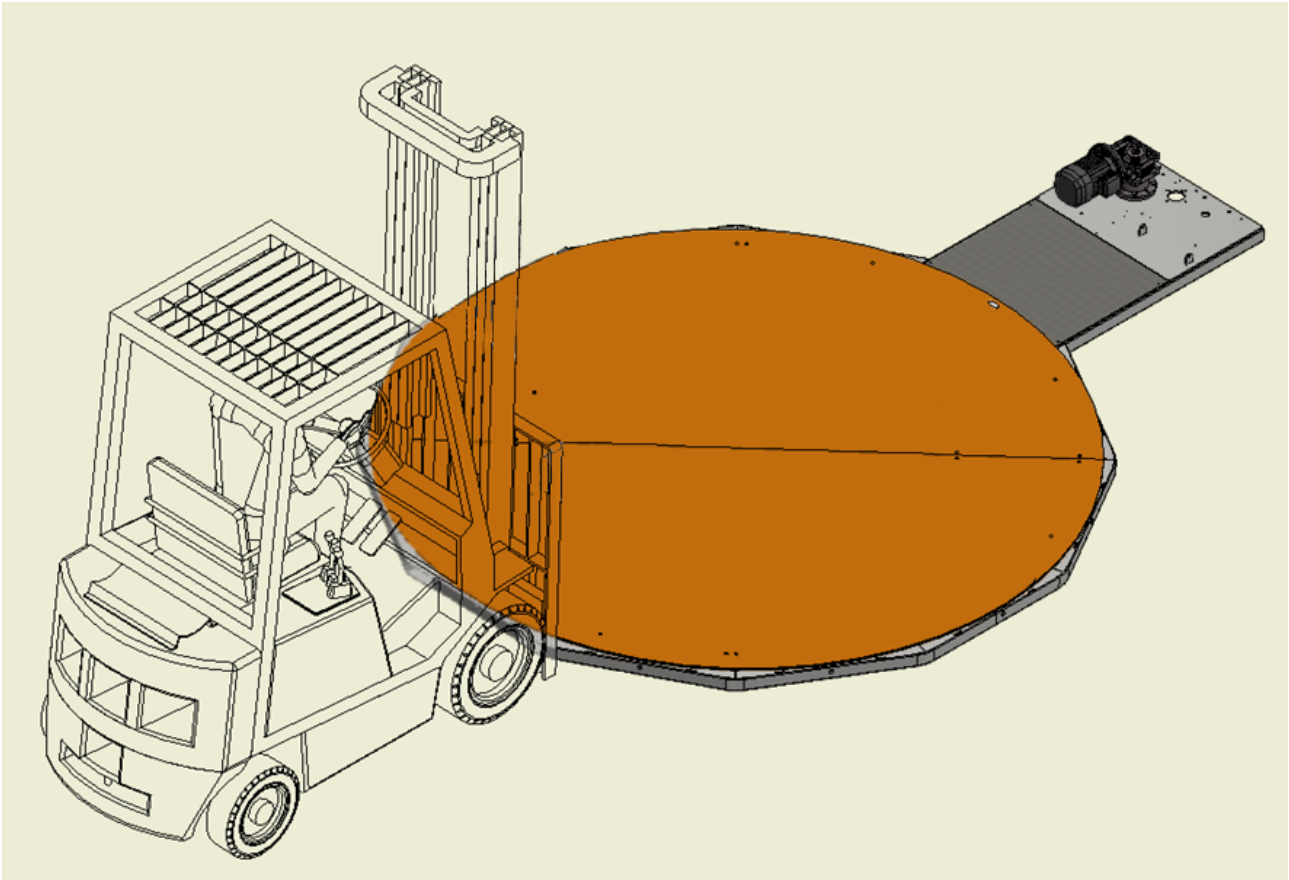
- 5) Smooth the surface several times with a straight edge in order to realize the plane surface.



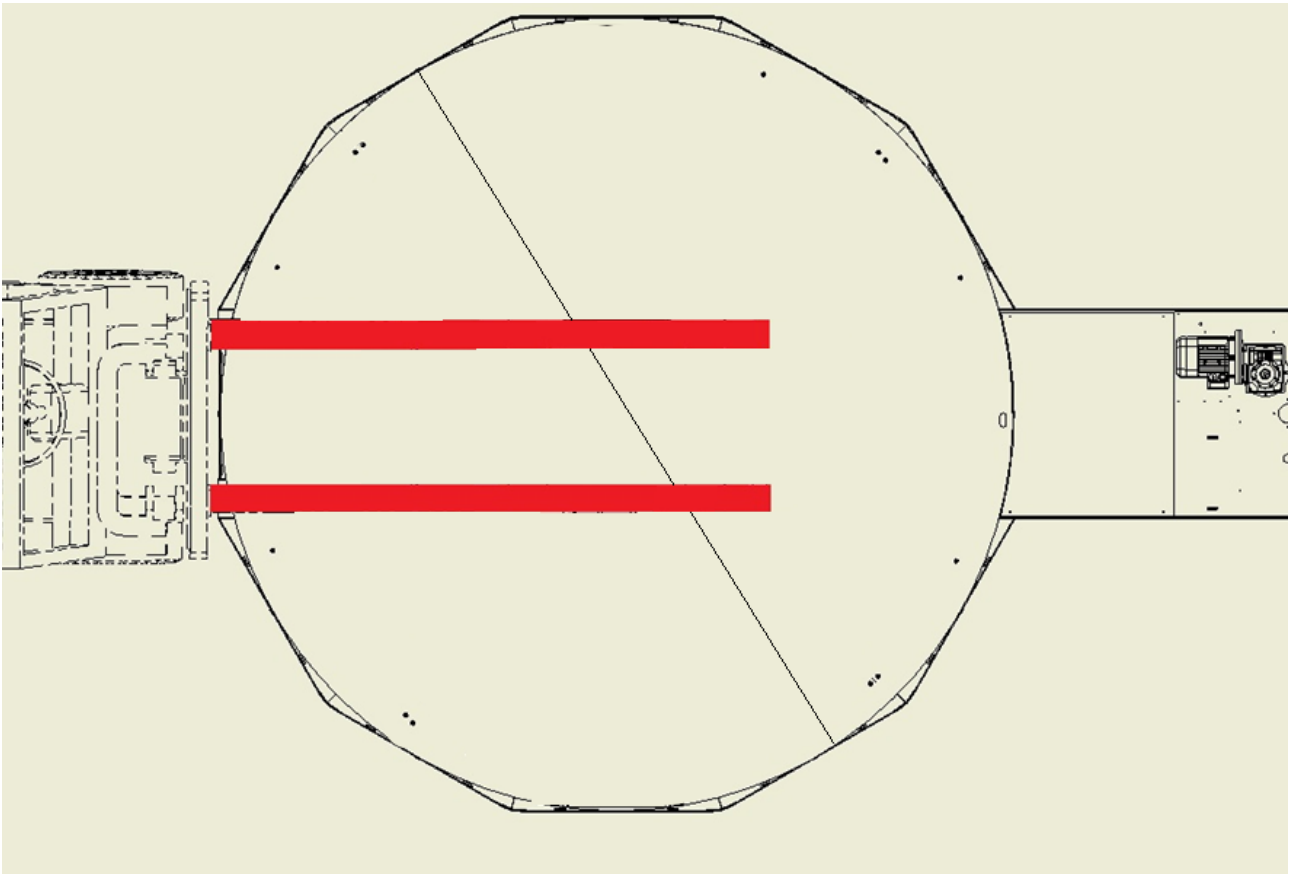
- 6) Lift up the machine by the column side, and put it into the hole predisposed on the ground.



If the turntable of the machine is larger than 2400 of diameters, the operator has to put the fork lift truck on the front side of the turntable as show in picture below.



Use fork-lift truck with long forks or with extendable forks.



- 7) Screw the plates on the frame to realize the surface and to allow the passage of the transpallet.

